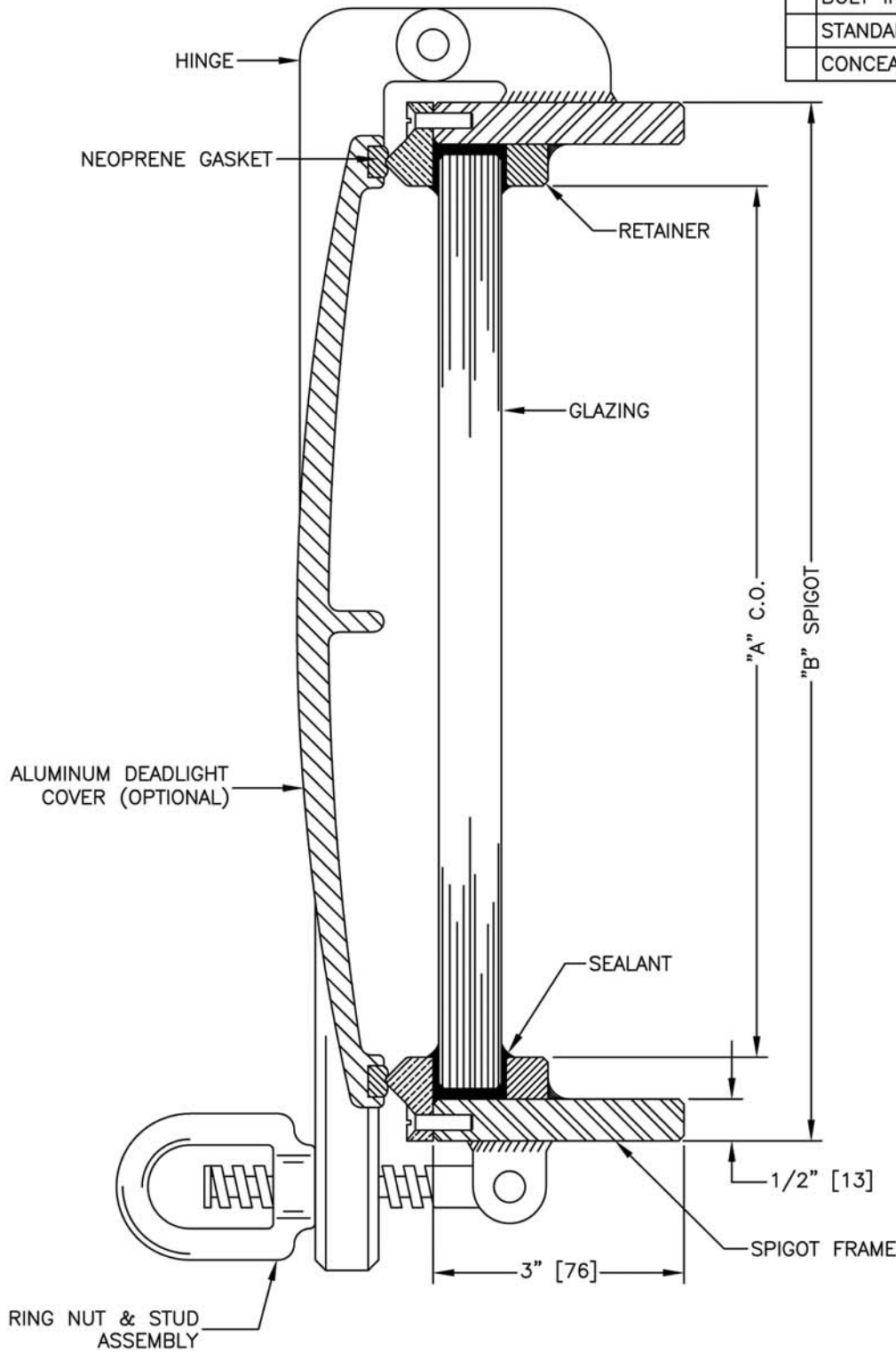
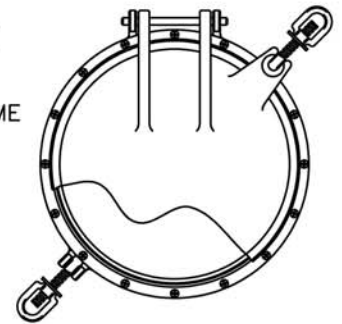


INSTALLATION	
•	WELD IN
	BOLT IN
	STANDARD CLAMP IN
	CONCEALED CLAMP IN

DIMENSION SCHEDULE	
A	B
12" [305]	14"
14" [356]	16"
16" [406]	18"
18" [457]	20"



GLAZING THICKNESS RANGE FROM 1/2" [13mm] TO 1" [25mm]
 SPECIFY STEEL OR STAINLESS STEEL SPIGOT.



	TITLE:	MODEL NO.	REV
	WELD-IN PORTLIGHT	WIN-3001-W	—
	SCALE: N/A	SHEET: 1 OF: 1	

Weld in Fixed Portlight with Deadlight Cover



PACIFIC COAST MARINE
 8000 23RD DRIVE WEST, EVERETT, WASHINGTON, USA 98203
 PHONE: +1.425.743.9550 WWW.PCMII.COM

PORTLIGHT